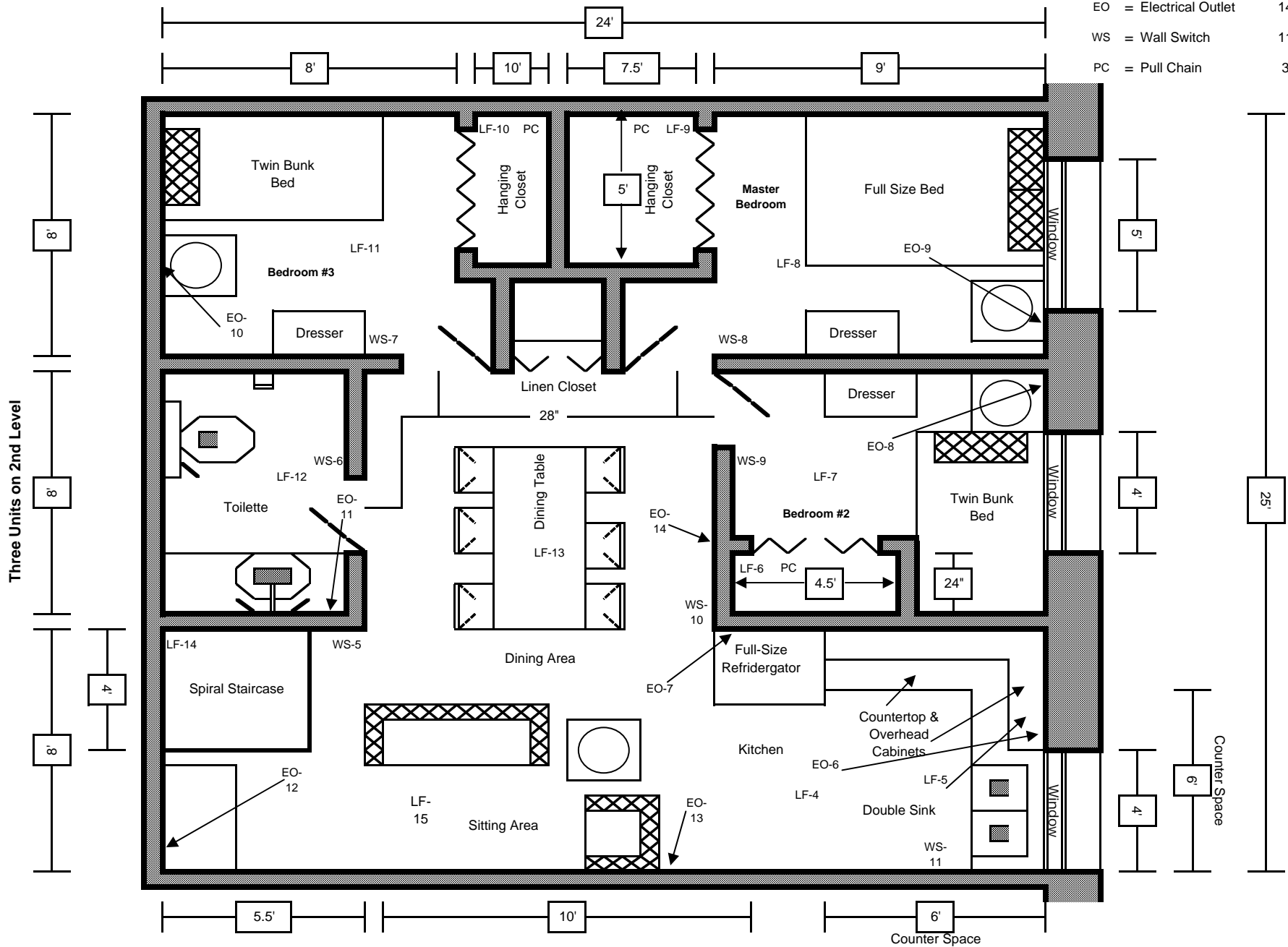


## Emerald Floorplan - 4 Units

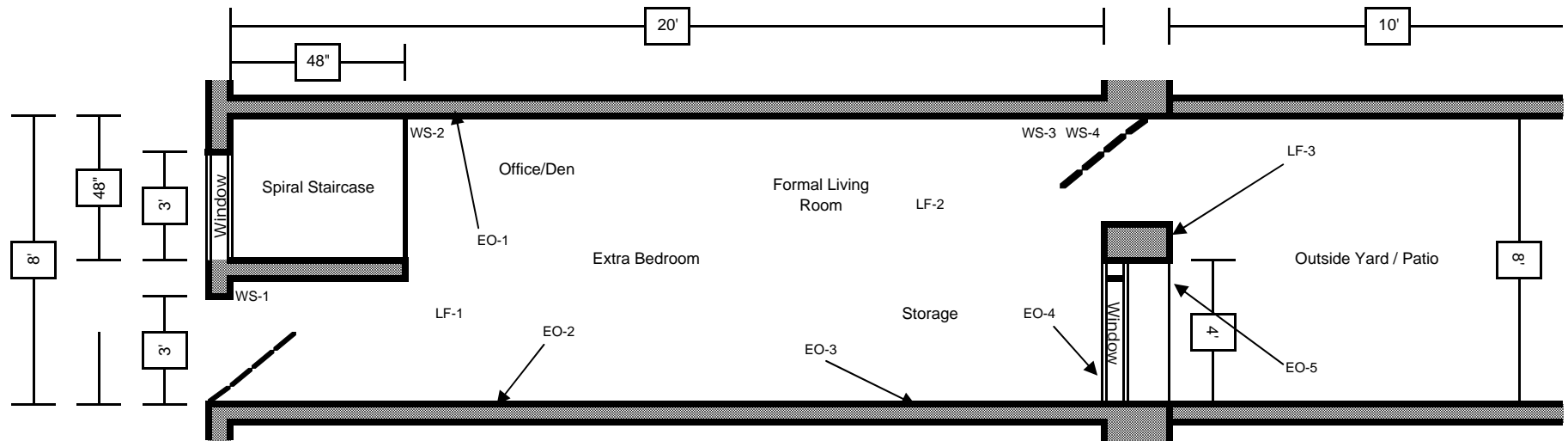
Maximum Occupancy Six to Eight (6-8) People

- LF = Lighting Fixture      15
- EO = Electrical Outlet    14
- WS = Wall Switch        11
- PC = Pull Chain         3



**Emerald Floorplan - 4 Units**  
**Maximum Occupancy Six to Eight (6-8) People**

One Unit on 1st Level



- LF = Lighting Fixture      15
- EO = Electrical Outlet      14
- WS = Wall Switch            11
- PC = Pull Chain              3