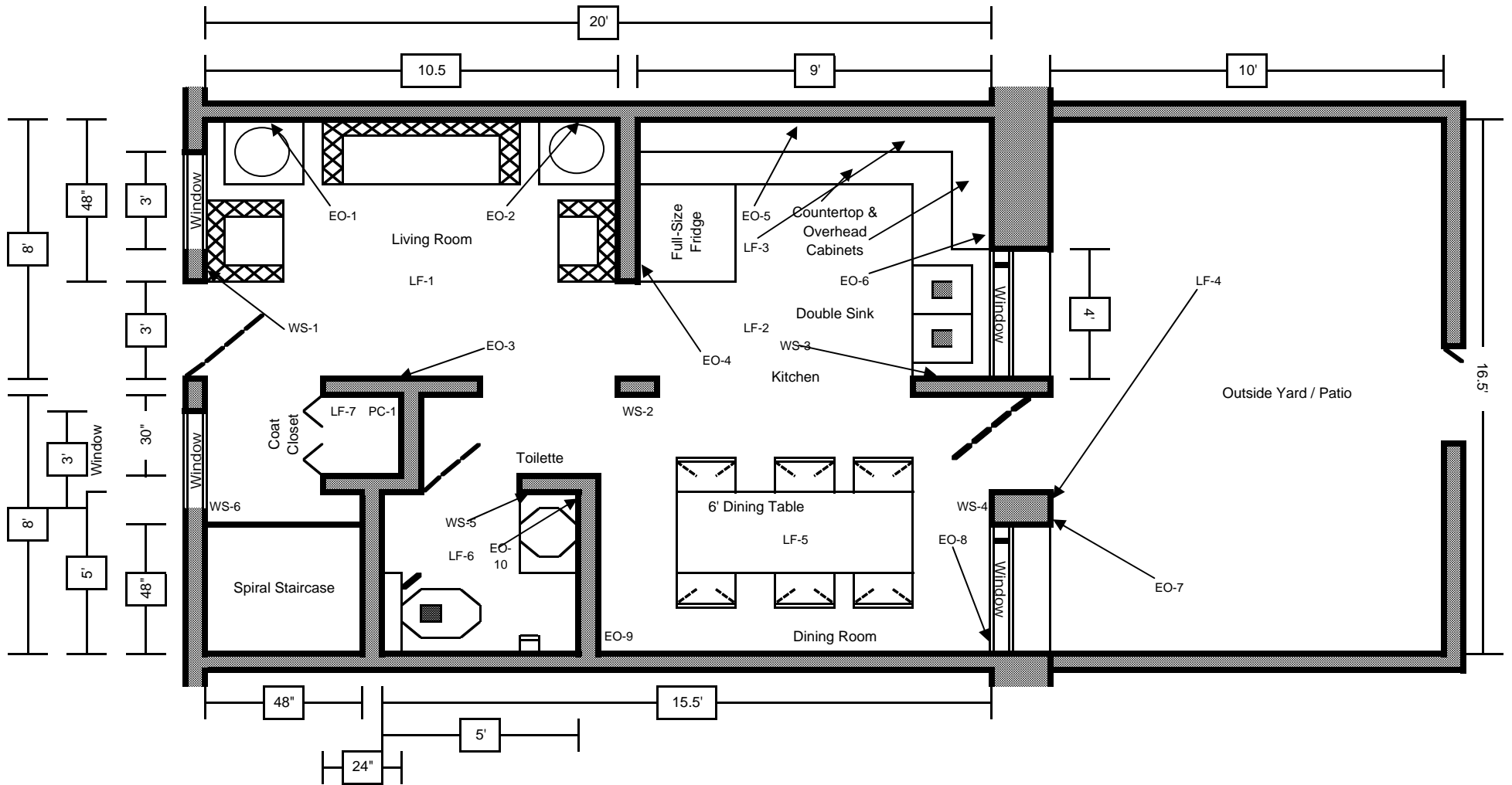


Sapphire Floorplan - 5 Units

Maximum Occupancy Six (6) People

1st Level



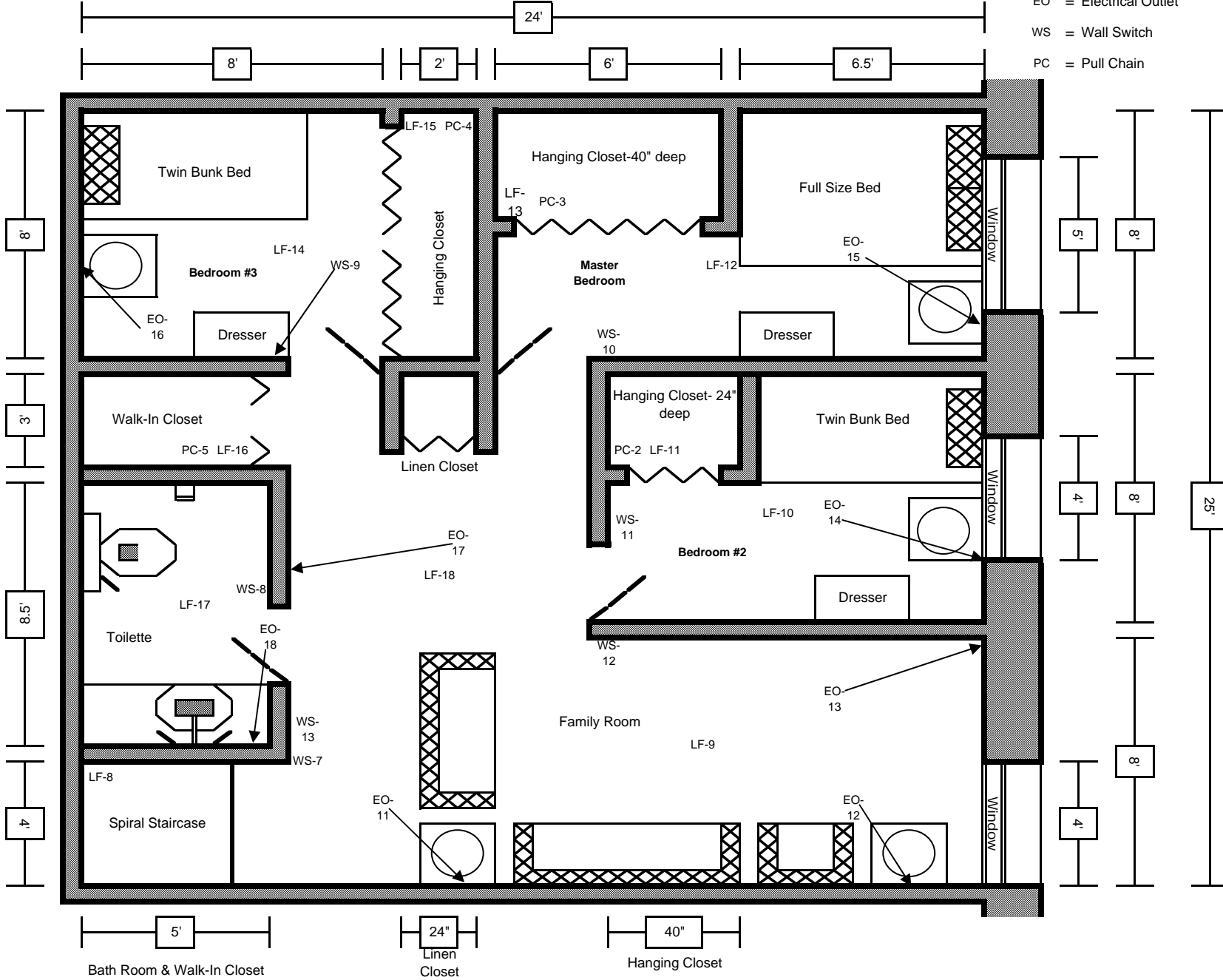
- LF = Lighting Fixture 18
- EO = Electrical Outlet 18
- WS = Wall Switch 13
- PC = Pull Chain 5

Sapphire Floorplan - 5 Units

Maximum Occupancy Six to Eight (6-8) People

- LF = Lighting Fixture 18
- EO = Electrical Outlet 18
- WS = Wall Switch 13
- PC = Pull Chain 5

Three Units on 2nd Level



5' Bath Room & Walk-In Closet

24" Linen Closet

40" Hanging Closet